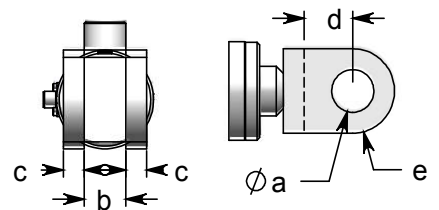
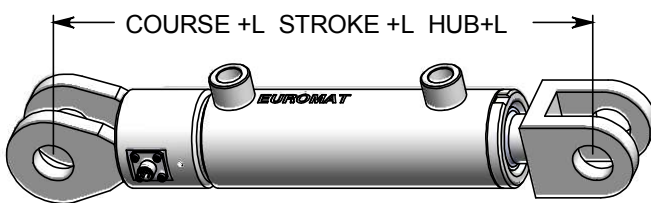
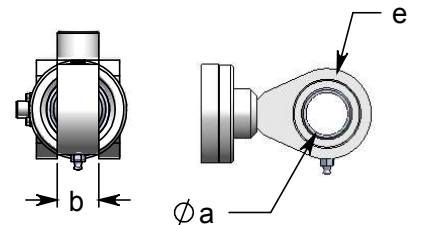
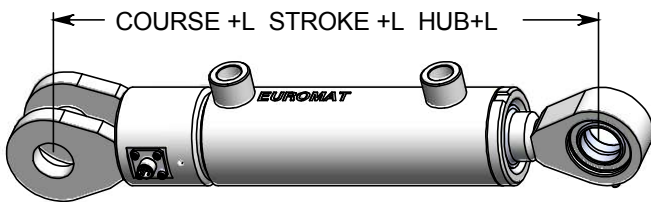
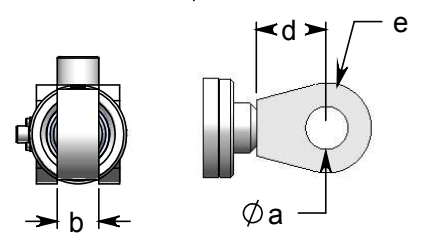
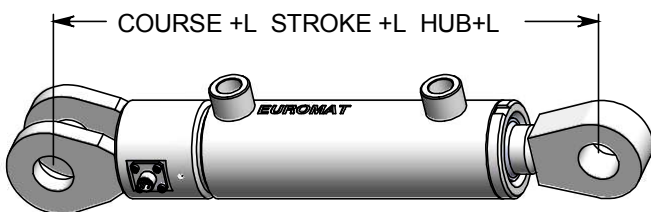
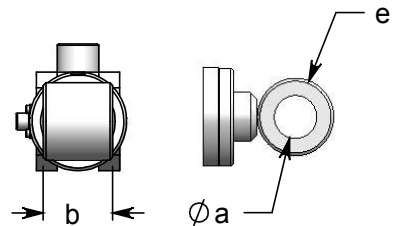
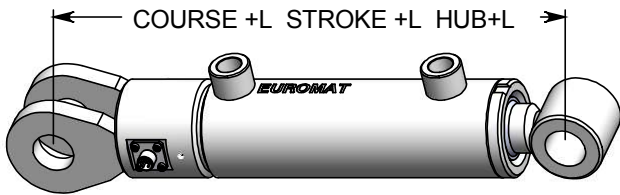
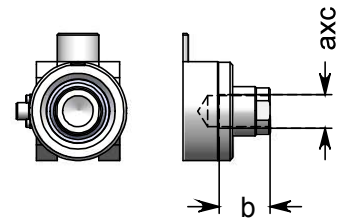
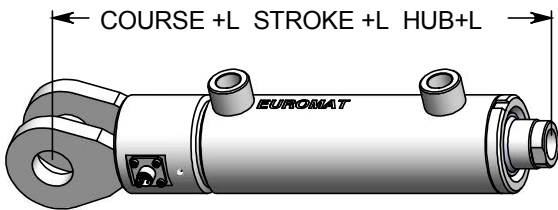
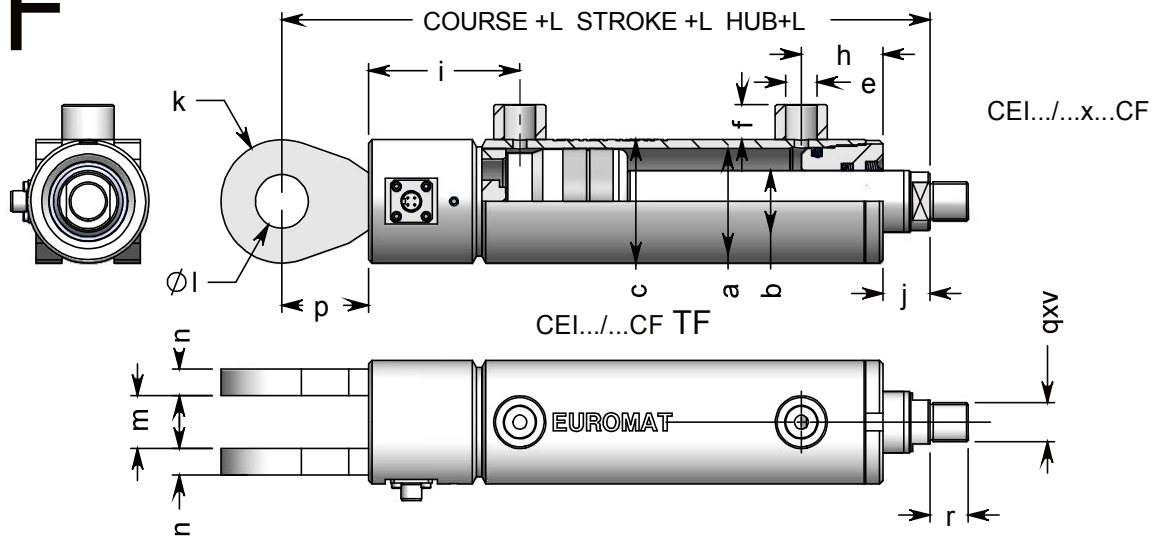


CF



EUROMAT®

HENRION-HYDRAULIQUE S.A.S.
 Route de Corbie 80450 CAMON (AMIENS) FRANCE
 Tel : +33 (0)3 22 70 20 40 - Fax : +33 (0)3 22 70 20 49
 www.euromat.tm.fr / email : euromat@euromat.tm.fr

CEI.../... CF TF	DONNEES TECHNIQUES				TECHNICAL SPECIFICATIONS				TECHNISCHE ANGABEN			
a	60	60	60	70	70	80	80	100	100	125	125	
b	30	35	40	35	40	45	50	50	65	65	80	
c	70	70	70	80	80	90	90	115	115	140	140	
e	3/8	3/8	3/8	3/8	3/8	3/8	3/8	1/2	1/2	1/2	1/2	
f	20	20	20	20	20	20	20	20	20	20	20	
g	0	0	0	0	0	0	0	0	0	0	0	
h	47	47	47	47	47	50	50	60	60	70	70	
i	19	19	19	19	19	19	19	19	19	19	19	
j	19	19	19	19	19	20,5	20,5	20	20	19,5	19,5	
k	35	35	35	35	35	43	43	50	50	63	63	
l	30	30	30	30	30	35	35	40	40	50	50	
m	30	30	30	30	30	35	35	40	40	50	50	
n	15	15	15	15	15	17,5	17,5	20	20	25	25	
p	50	50	50	50	50	60,5	60,5	70	70	85	85	
q	22	22	22	28	28	35	35	45	45	58	58	
r	22	22	22	28	28	35	35	45	45	58	58	
v	1,5	1,5	1,5	1,5	1,5	1,5	1,5	1,5	1,5	1,5	1,5	
L	265	265	265	265	265	285	285	275	275	320	320	

CEI.../... CF TT											
a	0	24	24	0	24	30	36	0	45	0	52
b	0	40	40	0	40	50	65	0	85	0	90
e		2	2		2	2	2		3		3
L	0	265	265	0	265	285	285	0	275	0	320

CEI .../... CF TO											
a	30	30	30	30	30	35	35	40	40	50	50
b	50	50	50	50	50	60	60	80	80	90	90
e	27,5	27,5	27,5	27,5	27,5	30	30	35	35	45	45
L	290	290	290	290	290	310	310	305	305	355	355

CEI .../... CF CM											
a	30	30	30	30	30	35	35	40	40	50	50
b	30	30	30	30	30	35	35	40	40	50	50
d	50	50	50	50	50	60	60	70	70	85	85
e	32	32	32	32	32	40	40	47	47	60	60
L	315	315	315	315	315	340	340	345	345	405	405

CEI .../... CF RO											
a	30	30	30	30	30	35	35	40	40	50	50
b	30	30	30	30	30	35	35	40	40	50	50
d	50	50	50	50	50	60	60	70	70	85	85
e	32	32	32	32	32	40	40	47	47	60	60
L	315	315	315	315	315	340	340	345	345	405	405

CEI .../... CF CF											
a	30	30	30	30	30	35	35	40	40	50	50
b	30	30	30	30	30	35	35	40	40	50	50
c	15	15	15	15	15	17,5	17,5	20	20	25	25
d	35	35	35	35	35	43	43	50	50	63	63
e	32	32	32	32	32	40	40	47	47	60	60
L	315	315	315	325	325	375	375	345	345	400	400